



avighna



- **110 Single BHK Units**
- **sizes ranging from 575 - 750 Sq.ft -S.B.A**
- **Courtyard facing homes**
- **42% open spaces**
- **RERA Compliant Project**

LOCATION



JIGANI - ANEKAL ROAD

<https://goo.gl/maps/nsNNYJodSG22>



LOCATION



JIGANI - ANEKAL ROAD

JIGANI APC CIRCLE	5 Km
NARAYANA HRUDAYALAYA	8 Km
UPCOMING METRO STATION	7 Km
Electronic city	12 km
Silk Board	23 km
Koramangala	25 km
Jayanagar	28 km

PROMOTERS



Anantharam Varayur has spent close to three decades in the IT sector and has an unbridled passion to develop active senior living. He is the Executive Director at BNI Bangalore and has helped more than 2000 members develop their business successfully. Anantharam along with Sumathy have travelled to over 15 countries to understand the culture of that place and retirement homes.

Sumathy Anantharam nurses a passion to serve the senior community. She has close to three decades of experience in the IT sector. She completed the ISB Women Entrepreneurship Program and mentors young entrepreneur helping them choose the right path in their business career.

Mangalchand Jain brings with him a more than two decades of experience in developing close to 1200 acres of land near Bangalore, Hyderabad, Kodaikanal and Jaipur. His recent project - Sukh Shanti- the retirement home has been running successfully for the past five years.

Kushal Ramesh , Our project Partner in marketing & sales comes with 7 years of background in Traditional buying and selling of Real Estate. His emotional connect with home buyers made him choose senior living as he believes the elders of the family should be treated the best and they deserve it .

WHY MANASUM



Age friendly Design

Support bars across the Toilets, Anti-skid tiles, WheelChair Friendly Homes, Corridors, Lobbies and Common Areas and Courtyard are just a few age friendly features.



Hassle-free living

Worry not of that burnt bulb, worry not of opening your house door, worry not of the food served, worry not of the air you breathe, when there isn't anything to worry, why worry?



Active Life

Walking tracks, Therapeutic pool, Yoga and Meditation centre, all of these and more to keep the mind, body and soul active.



24/7 support

Ring that bell near your couch at hand level & be rest assured that you will be served all the year!

SENIOR SPECIFICATIONS



Stretcher
Friendly Lifts



Anti Skid
Flooring



Emergency
Alarm bells



Wheel chair
friendly doors

Aerial View



Courtyard - Walkway View



Walkway View



Courtyard View



Bay Window View



FLOOR PLAN



Rera Carpet Area

395 Sft

Balcony

26 Sft

Super Built Up Area

620 Sft

FLOOR PLAN



Rera Carpet Area
404 Sft
Balcony
103 Sft
Super Built Up Area
747 Sft

AMENITIES



Food & Dining Area

AMENITIES

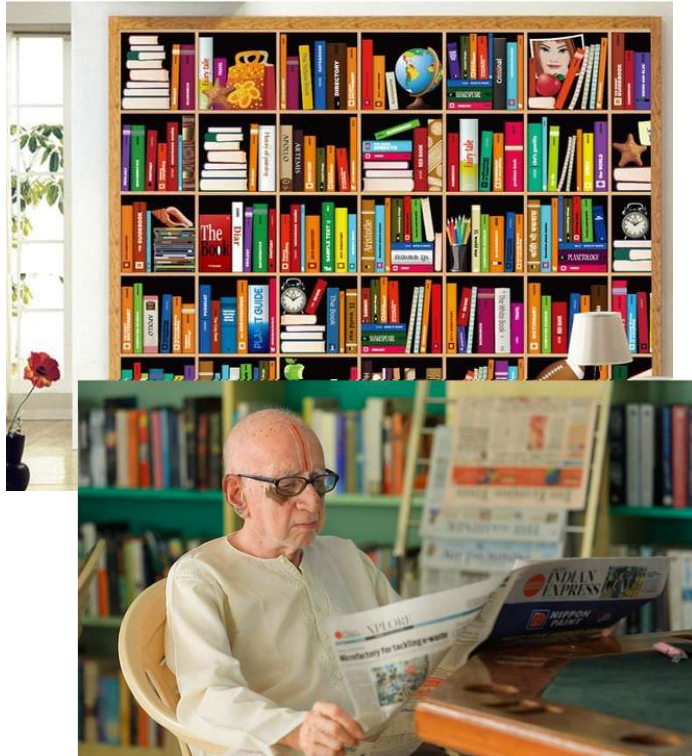


In-house Clinic
with 24X7
Resident Nurse



AMBULANCE

AMENITIES



well-equipped library



Indoor games

AMENITIES



Physiotherapy Room



Outdoor senior friendly gym

AMENITIES



← **Wi- fi Enabled
Business Centre**

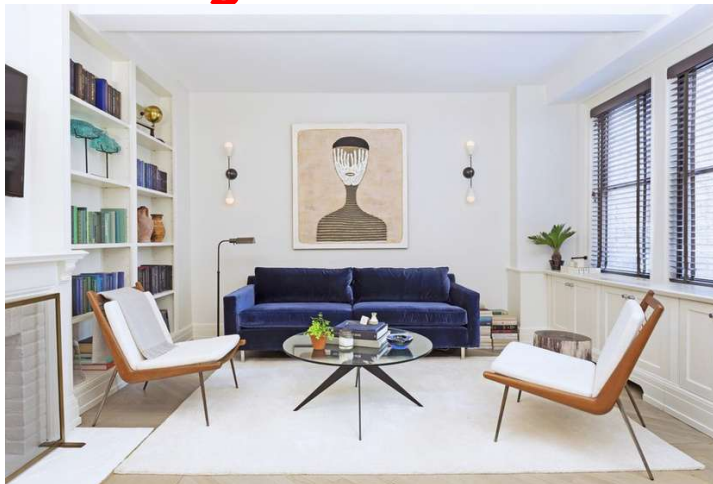
**Multipurpose
Open Hall** ↓



AMENITIES



Lounge and TV room.



**Bond with your grandchildren
at the Children's Park**

AMENITIES



Guest House
visitors can be
adequately
accommodated



Walking tracks
inside – around the
courtyard

SERVICES AND CARE



Vegeterian Buffet all 3 times with Coffee & Tea

SERVICES AND CARE



Tie – Up with close by hospitals

SERVICES AND CARE



Shuttle Service



SERVICES AND CARE



Laundry



House Keeping



OWNER SHIP



FREE HOLD



PLAN APPROVED
APA/cc/45/2017-18

RERA Reg. No.

PRM/KA/RERA/1251/308/PR/180119/002451

PROJECT STATUS

READY TO MOVE IN



RECURRING COST of LIVING for RESIDENTS

- **VEGETARIAN 3 Course Buffet Meal**, Morning and evening Coffee with the option of supply to the residence @
(Rs. 8000 + 5% GST/month/head)
- **Common area maintenance @ 5.5 Rs. + 18% GST / Sq. Ft** also includes nursing care, medical facility maintenance and ambulance services.
- **In- Housemaid charges** @ actuals based on the requirement
- **Shuttle and travel services** at a very low cost on a daily basis
- **Laundry services** at per load basis charged on consumables only
- **Private caretakers, nurses, full-time maids** @ Actuals depending on the services rendered.